



# SCS8 Stone Cutting Circular Saw

Nov. 2024

Internal & Confidential

**AGP** | SCS8 Stone Cutting Circular Saw

## AGP TAIWAN

Lee Yeong Industrial Co., Ltd.

No.2, Kejia Rd., Douliu City, 64057, Taiwan

Tel : 886-5-5518689 Fax : 886-5-5518635

## AGP EUROPE BV

Evenbroekveld 16D, 9420 Erpe-Mere, Belgium

Tel : +32 53 21 62 22 Fax : +32 53 83 88 20



# Introduction

## Target group & Applications

### SCS8 Introduction

- **Wet or Dry Cutting**

Enjoy the economy of wet cutting, or the convenience of dry cutting. This stone saw can run 200 mm diamond blades for 70 mm depth of cut, as well as 180 mm blades for 60 mm depth of cut. We recommend using 200 mm diamond blades for dry cutting, and 180 mm blades for wet cutting due to the different speed requirements of dry and wet cutting.

- **Bevel Cutting**

The capability to perform bevel cuts up to 45° makes this an extremely versatile cutter.

- **Precision Features**

The standard parallel guide allows for straight cuts and the stepless cutting depth adjustment allows for precise control. Use the optional guide rail system for even more precision cutting possibilities.

- **Premium Motor and Electronics**

Its 2200 W motor features constant speed electronics for optimized rotational speed. Its high torque makes this a very effective cutter, even for tough materials such as thick basalt and granite slabs.

### Target Groups & Applications

This saw is an indispensable tool for stone fabricators / installers, hard landscapers, tile contractors, and general contractors.

It is perfect for a range of natural and synthetic stone materials such as basalt, granite, sandstone, marble, terrazzo slabs, engineered stone, etc.

It is great for cutting slabs to size, fitting facing stones, cutting large-format ceramic tiles, and a wide range of tasks whenever it is required to precisely cut stone or tiles.



# Sales Arguments



## Constant Speed Motor

The constant speed electronics maintain an even speed for superior cutting results.



## Waterproof/Dustproof Switch

The Hall-Effect switch is completely impervious to dust and slurry.



## LED Load Indicator

The LED load indicator allows the operator to work at peak efficiency.



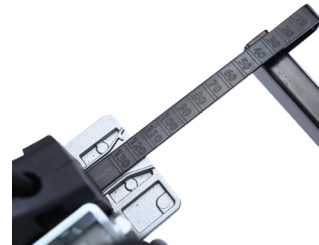
## Main Handle Inline with Blade

The handle design allows the operator to push in the same plane as the blade for less effort and better control.



## Bevel Cutting Capability

The bevel control allows clean, precise bevel cuts at any desired angle up to 45°



## Parallel Guide

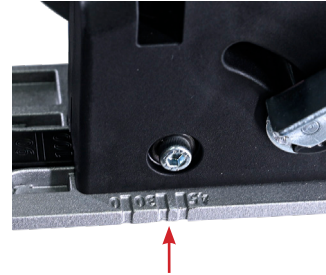
The parallel guide comes standard and allows precise straight cuts. Scale provided for convenient setup.

# Sales Arguments



## Depth Control

Precise, stepless depth control for situations which require limited cutting depth, such as renewing seams. Scales are provided for both 200 mm and 180 mm blades.



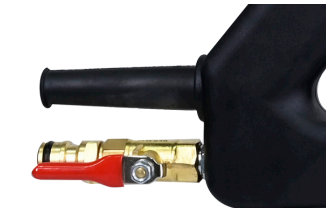
## Sighting Notches

The sighting notches allow the operator to confidently follow the cutting line. Marks are provided for 0°, 30° and 45° bevels.



## Dry Cutting with Dust Control

The vacuum port and dust control design helps minimize dust when dry cutting. We recommend using 200 mm blades for dry cutting due to the higher rotational speed required.



## Wet Cutting with Water Feed

The built-in water feed suppresses harmful dust and allows longer blade life. We recommend using 180 mm blades for wet cutting due to the lower rotational speed required.



## On-Board Wrench Storage

The L-hex wrench is always there when you need it to change the blade. All other adjustments are tool free.



## Anti-Friction Strips on Base

The strips allow smooth movement over the workpiece.



# Technical Specifications

Model	SCS8
Power Input	2200 W (220 V), 1700 W (110 V)
Voltage, Frequency	220-240 V~ 50-60 Hz or 110-120 V~ 50-60 Hz
No Load Speed (no)	7200 min <sup>-1</sup>
Arbor	22.23 mm (7/8")
Blade Diameter	200 mm (8") or 180 mm (7")
Cutting Depth (0°)	70 mm (65 mm on rail) 200 mm blade 60 mm (55 mm on rail) 180 mm blade
Cutting Depth (45°)	52 mm (47 mm on rail) 200 mm blade 45 mm (40 mm on rail) 180 mm blade
Cutting Width Range (w/ parallel guide)	10 - 130 mm
Overload Protection	With
Insulation Class	Class I with PRCD / GFCI
Dimensions (LxWxH)	484 x 313 x 198 mm
Weight	5.7 kg (12.5 lb)

- 1

Main Handle
- 2

Trigger Switch
- 3

LED Load Indicator
- 4

Dust Port Cap
- 5

L-Hex Wrench
- 6

Front Handle
- 7

Bevel Lock Lever
- 8

Sighting Notches
- 9

Parallel Guide
- 10

Diamond Blade (Optional)
- 11

Arbor Screw
- 12

Water Feed Valve
- 13

Parallel Guide Lock Knobs
- 14

Bevel Scale
- 15

Arbor Lock
- 16

Depth Scale
- 17

Depth Lock Lever
- 18

Trigger Release Button
- 19

Guide Rail (Optional)



# Offer Content

## Standard Accessories

- ① Plastic Carry Case
- ② Quick-release Water Hose Coupling
- ③ M6 L-Hex Wrench
- ④ PRCD / GFCI Interruptor
- ⑤ Parallel Guide



## Optional Accessories

200 mm (8") Diamond Blade  
180 mm (7") Diamond Blade

- ⑥ Aluminum Guide Rails  
(1400 mm & 800 mm available)
- ⑦ Guide Rail Connector
- ⑧ Lever Clamp



# Comparison Table

Brand



Wet Stone Saws

Model	SCS8	CS 60	EDS 181	4107R
Power Input	2200 W	1400 W	2300 W	1400 W
Blade Ø	180 mm & 200 mm	170 mm	200 mm	180 mm
Depth of Cut (0°)	70 mm (65 mm on rail) 200 mm blade 60 mm (55 mm on rail) 180 mm blade	60 mm (54 mm on rail)	63 mm (57 mm on rail)	60 mm
Depth of Cut (45°)	52 mm (47 mm on rail) 200 mm blade 45 mm (40 mm on rail) 180 mm blade	44 mm (38 mm on rail)	(not listed)	N/A
No Load Speed	6000 /min	6200 /min	7500 /min	5000 /min
Arbor Size	22.23 mm	22.23 mm	22.23 mm	25.4 mm
Weight	5.7 kg	4.5 kg	7.7 kg	6.8 kg
Dimensions (L x W x H)	484 x 313 x 198 mm	360 x 280 x 170 mm	(not listed)	(not listed)
Handle Inline with Blade	Yes, for best control 👍	No, Offset		Yes
Hall-Effect Switch	Yes, waterproof / dustproof 👍	No, conventional type	No, conventional type	No, conventional type
Vacuum Port	Yes (independent from water feed)	No (wet cutting only)	Yes (shared w/ water feed)	No (wet cutting only)
Blade Rotation	Upcut	Upcut	Upcut	Upcut
Base Material	Aluminum	Magnesium	Steel	Steel

# Comparison Table

Brand

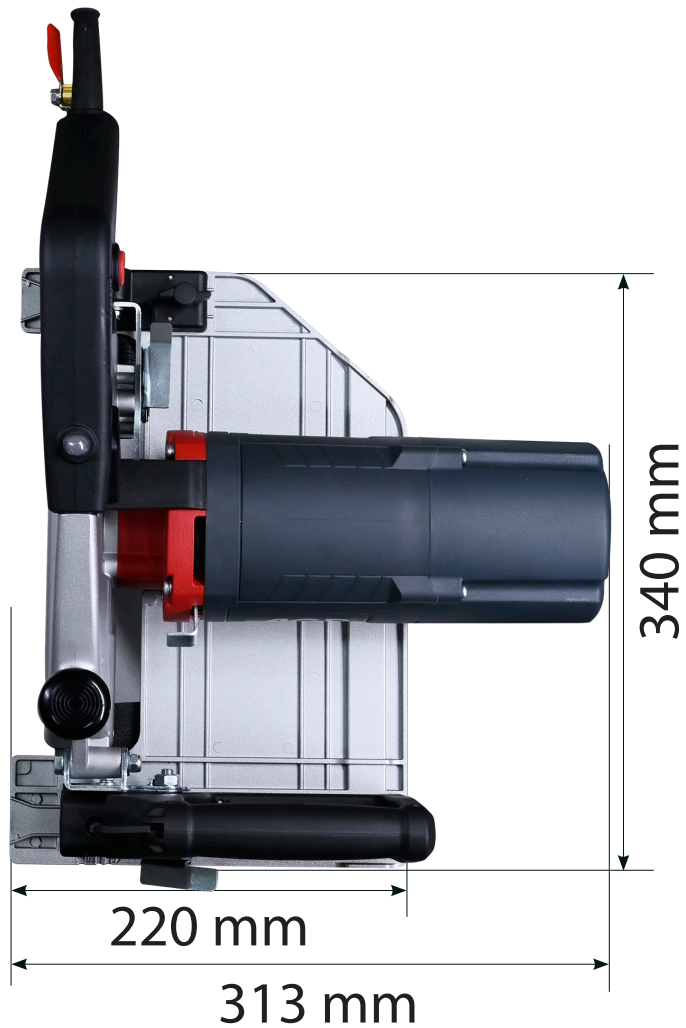


Wet Stone Saws

Model	SCS8	CS 60	EDS 181	4107R
Front Handle on Base	Yes	Yes	Yes	No
On-Board Wrench Storage	Yes 🍷	No	No	No
Sighting Notches	Yes, for 0°, 30°, 45° 🍷	Yes, for 0°, 30°, 45°	Yes (0°)	Yes
Guide Rail	optional	optional	optional	No
Bevel Cutting 45°	Yes (0° - 45°)	Yes (0° - 45°)	Yes (0° - 45°)	No
Constant Speed	Yes 🍷	No	No	No
Overload Protection	Yes	Yes	Yes	No
Thermal Protection	Yes	Yes	Yes	No
Soft Start	Yes	Yes	Yes	No
LED Load Indicator	Yes 🍷	No	Yes	No
Street Price (w/o tax) (as of 2024.02)		776,97 €	603,48 €	524,10 €
Conclusion	The <b>AGP</b> offers excellent power and a very stable base for accurate stone cutting. It is capable of bevel cutting and the parallel guide and option of using a guide rail provide precise cuts. Both wet and dry cutting are supported. With a 200 mm blade, the <b>AGP</b> achieves the best-in-class depth of cut in all situations. The <b>AGP</b> is the only tool here with constant speed and Hall-effect switch for superior performance and reliability.			

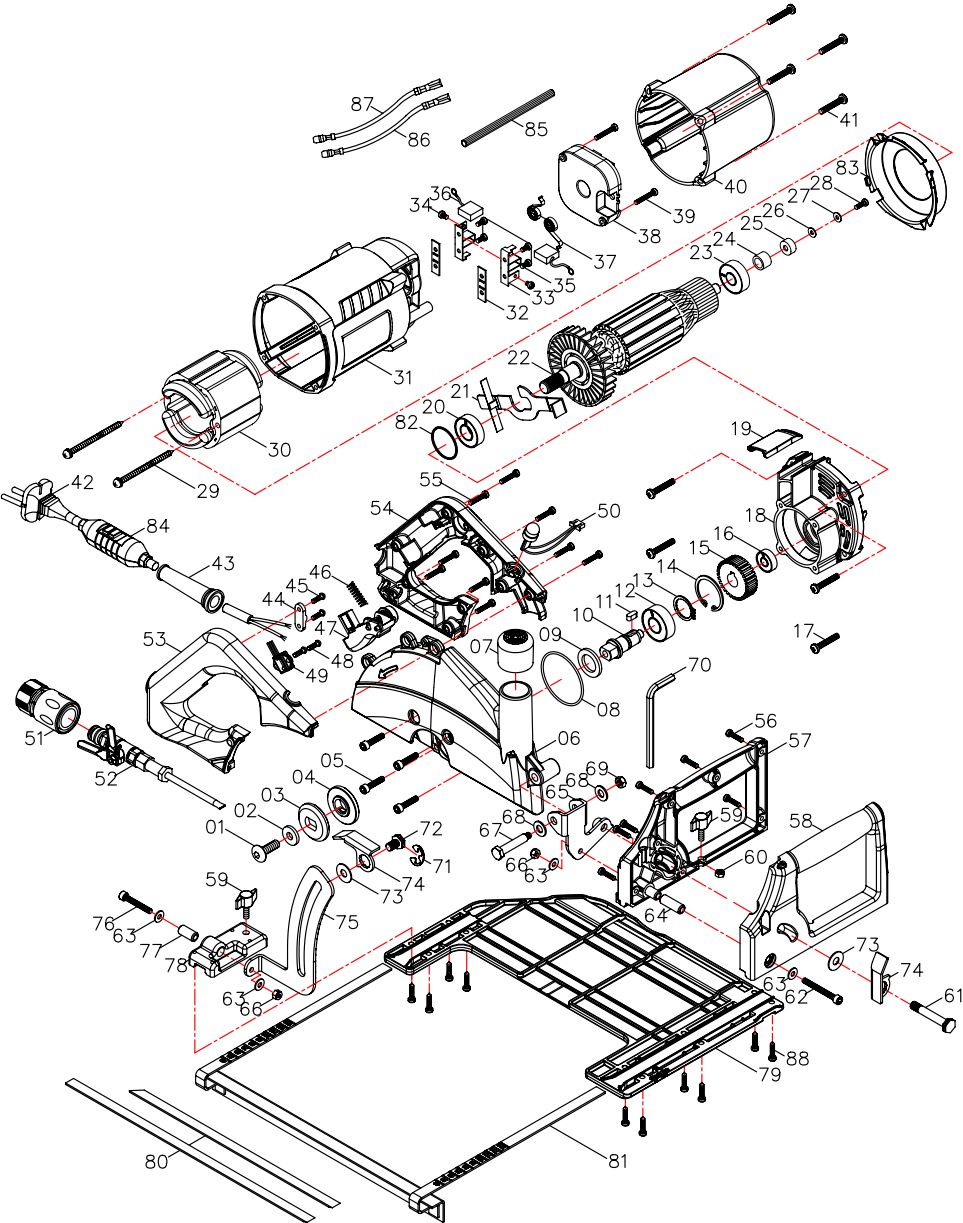


## Tool Dimensions



# Exploded View

MODEL : SCS8 STONE CUTTING CIRCULAR SAW



NO.01~88 Version 2024.06.28 D.122