



S800 Drill Stand

Sep. 2024

Internal & Confidential

AGP TAIWAN

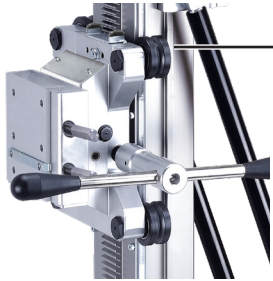
Lee Yeong Industrial Co., Ltd.
No.2, Kejia Rd., Douliu City, 64057, Taiwan
Tel : 886-5-5518689 Fax : 886-5-5518635

AGP EUROPE BV

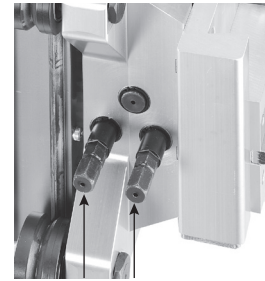
Evenbroekveld 16D, 9420 Erpe-Mere, Belgium
Tel : +32 53 21 62 22 Fax : +32 53 83 88 20



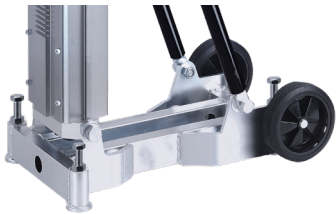
Sales Arguments



Roller Carriage Guidance
V-groove type low-friction and zero backlash roller guidance with eccentric adjustment.



Built-In Gear Reduction
Both 1:1 and 4:1 reduction gearing. Use the 1:1 spindle for fast motion and for small bits. Use the 4:1 reduction spindle for decreased operator effort with large bits or when pulling out cores.



Steel Box Section Base
The heavy duty steel base gives reliable stability with large diameters.



Steel-Reinforced Aluminum Column
Only the wearing surfaces, (the gear rack and roller tracks) are steel, for maximum strength and manageable weight.



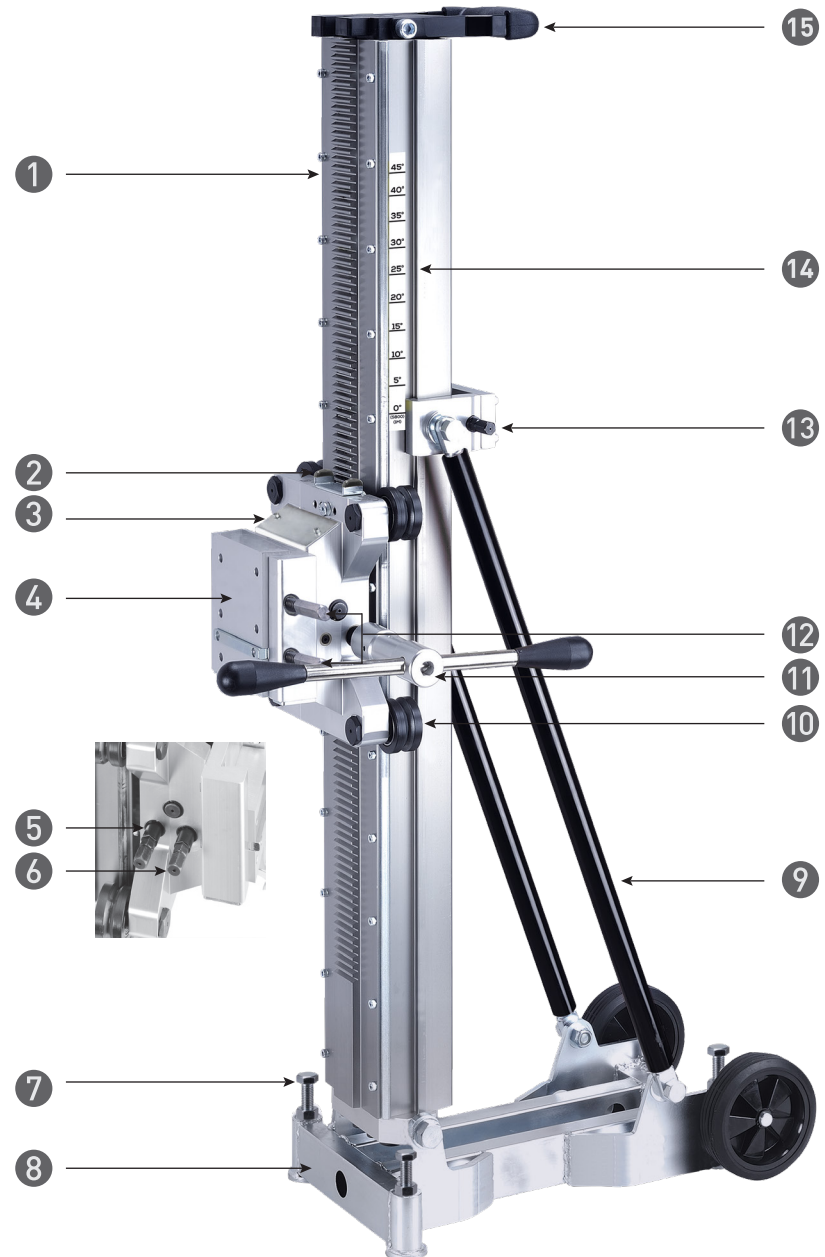
M12 Control Elements
For the convenience of the operator, all control elements on the stand, other than the leveling screws, are M12 head, and the crank handle can also be used as a wrench for these.



Technical Specifications

Model	S800
Capacity (with spacers)	800 mm (32")
Capacity (w/o spacers)	400 mm (16")
Effective Stroke (mm)	760 mm (30")
Dimensions (LxWxH)	555 x 275 x 1035 mm
Weight	26.5 kg (58 lb)

- 1 Column
- 2 Carriage Lock
- 3 Carriage
- 4 Motor Mount
- 5 1:1 Ratio Crank Spindle
- 6 4:1 Ratio Crank Spindle
- 7 Leveling Screws
- 8 Steel Base
- 9 Buttress Bars
- 10 Guide Roller
- 11 Crank Spindle
- 12 Cradle Locks
- 13 Tilt Lock
- 14 Tilt Scale
- 15 Handle



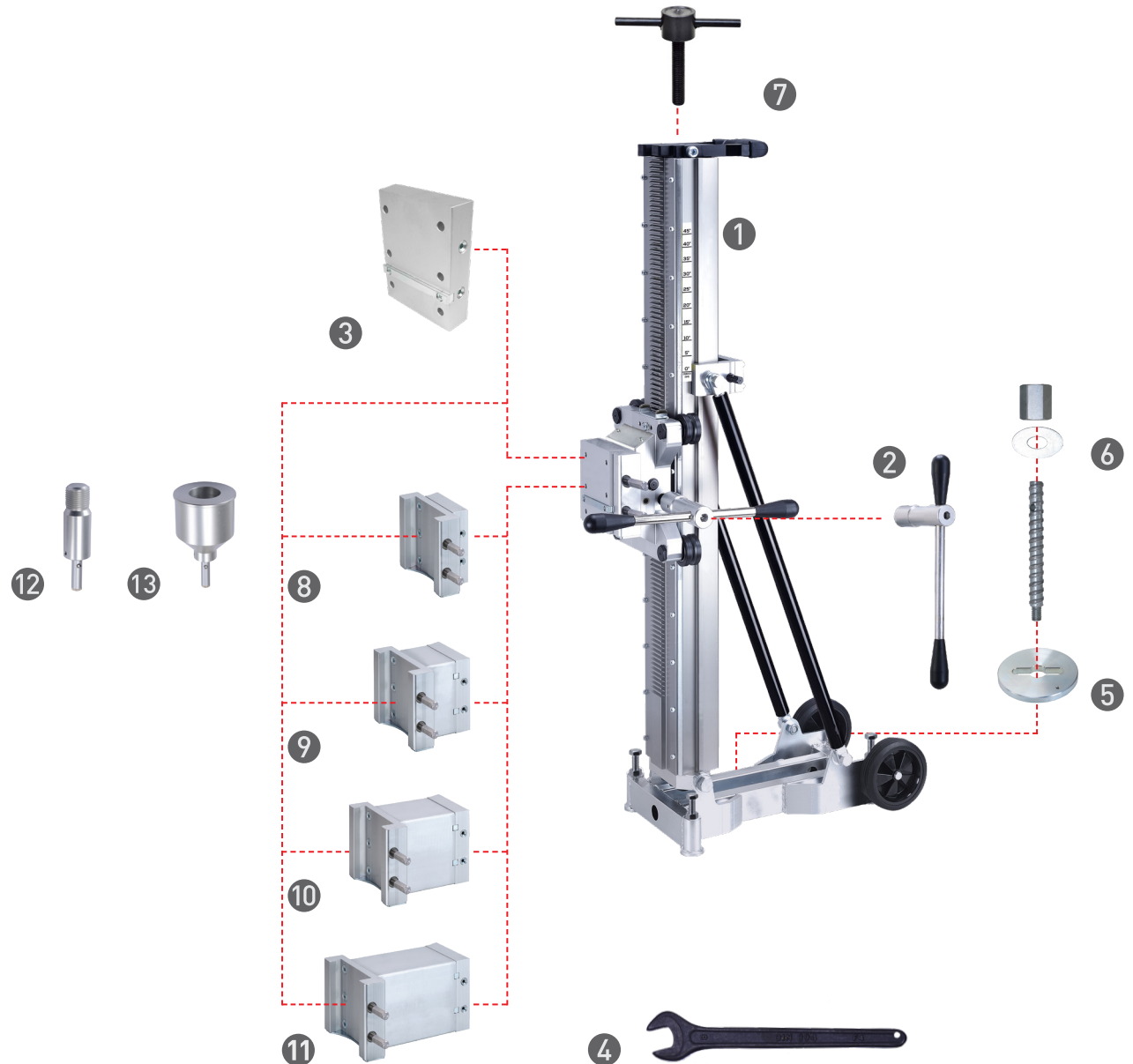
Offer Content

Standard Accessories

- ① S800 Drill Stand
- ② Crank Handle, 2 spoke sliding
- ③ Motor Mount, 6 bolt
- ④ M19 Open End Wrench

Optional Accessory

- ⑤ Anchoring Plate
- ⑥ Fixing Kit, M12 anchors
- ⑦ Jack Screw
- ⑧ Modular Extension Spacer, 45 mm (for Ø 500 mm, 20")
- ⑨ Modular Extension Spacer, 100 mm (for Ø 600 mm, 24")
- ⑩ Modular Extension Spacer, 150 mm (for Ø 700 mm, 28")
- ⑪ Modular Extension Spacer, 200 mm (for Ø 800 mm, 32")
- ⑫ Laser Aiming Device, ½" BSP
- ⑬ Laser Aiming Device, 1-¼" & Ø 60 mm



Comparison Table

Brand

AGP®

TYROLIT

Husqvarna

DIACOM

CARDI

800 mm Drill Stands



Model	S800	BC-2 Electric	DS 900	KF 700	KF 600	Profi Extra	C600
Capacity Ø (without spacers)	400 mm	👍 350 mm	350 mm	430 mm	400 mm	300 mm	300 mm
Capacity Ø (max. with spacers)	800 mm	1000 mm	900 mm	700 mm	600 mm	700 mm	600 mm
Stroke	760 mm (usable stroke)	830 mm	950 mm	1010 mm	1090 mm	650 mm	675 mm
Tilt Angle	0°- 45°	0°- 85°	0°- 60°	60° front and back	60° front and back	0°- 45°	0°- 45°
Motor Mount	dovetail type	Tyrolit ModulDrill quick-release	dovetail type	quick-release type	quick-release type	dovetail type	Cardi Cam Lock
Carriage	4 rollers (w/ eccentric adjustment)	👍 dual sliding pillar, chain driven	4 rollers (w/ eccentric adjustment)	4 stainless rollers	4 stainless rollers	4 steel rollers	sliding pads
Buttress Bars	steel (2)	steel (2)	steel (2)	steel (1)	optional	steel (2)	steel (2)
Feed Handle	2 spoke sliding, multipurpose, M12	4 spoke (not multipurpose)	3 spoke, square drive	3 spoke, square drive	3 spoke, square drive	2 spoke sliding, multipurpose, M12	2 spoke sliding, multipurpose, M19
Crank Gearing	1:1 on both sides, 4:1 on one side	1:1 & 4.5:1 at rear	1:1 both sides, 2:1 one side	1:1 & 2.4:1 at rear	1:1	1:1 on both sides, 3:1 on one side	1:1 on both sides
Functional Fastener Size	all M12 head (except leveling screws)	mix of different head sizes	mix of square drive and M17 head	mix of square drive and M19 head	mix of square drive and M19 head	mix of different head sizes	all M19 head
Base	anchor type, steel	anchor type, steel	anchor type, aluminum	anchor type, steel	anchor type, steel	anchor type, steel	anchor type, steel
Leveling Screws	19 mm hex head (4)	19 mm hex head (4)	17 mm hex head (4)	tommy bar type (4)	tool-free type (4)	19 mm hex head (4)	19 mm hex head (4)
Column	aluminum, steel reinforced	dual round pillars, steel	aluminum	stainless steel	stainless steel	aluminum, steel reinforced	steel
Spirit Levels	no	no	no	no	no	no	no
Carry Handle	yes	👍 no	no	no	no	yes	no
Vacuum Base Compatible	no	yes	no	no	no	no	no
Water Collector Compatible	yes	yes	yes	yes	yes	yes	yes
Wheels	yes	optional	optional	yes	yes	yes	yes
Weight	26.5 kg	30.0 kg	24.0 kg	43.0 kg	37.0 kg	25.0 kg	34.0 kg
Dimensions (L x W x H)	555 x 275 x 1035 mm	465 x 385 x 1340 mm	448 x 300 x 1300 mm	410 x 300 x 1540 mm	410 x 300 x 1540 mm	430 x 300 x 1200 mm	230 x 330 x 1110 mm
Street Price, EU w/o tax (as of 2022.09)		2079,30 €	2835,42 €	2989,00 €	2108,53 €	1427,00 €	1670,97 €

Conclusion

The **AGP** S800 is specifically designed for rig-mount type drill motors up to 800 mm diameter. The **AGP** uses the superior roller carriage system, rather than the sliding pad type. The carriage system is adjustable to always ensure stability and precision. The more common sliding pad system is less stable and less precise. For convenience, all the operative elements of the stand are the same head size, and the crank handle can be used as a wrench for these. On the **AGP**, the use of aluminum is maximized for manageable weight while using steel when necessary, such as in the base, to provide optimal strength. The **AGP** is clearly an excellent choice for drilling up to 800 mm.

Tool Dimensions (mm)

