



HC127 Hole Cutting Drill

Perfectly centered and perpendicular holes up to 127 mm diameter in pipes from 1-1/4" to 8-1/4"

Jun. 2024

Internal & Confidential

AGP | HC127 Hole Cutting Drill

AGP TAIWAN

Lee Yeong Industrial Co., Ltd.

No.2, Kejia Rd., Douliu City, 64057, Taiwan

Tel : 886-5-5518689 Fax : 886-5-5518635

AGP EUROPE BV

Evenbroekveld 16D, 9420 Erpe-Mere, Belgium

Tel : +32 53 21 62 22 Fax : +32 53 83 88 20

Introduction

Target group & Applications

HC127 Introduction

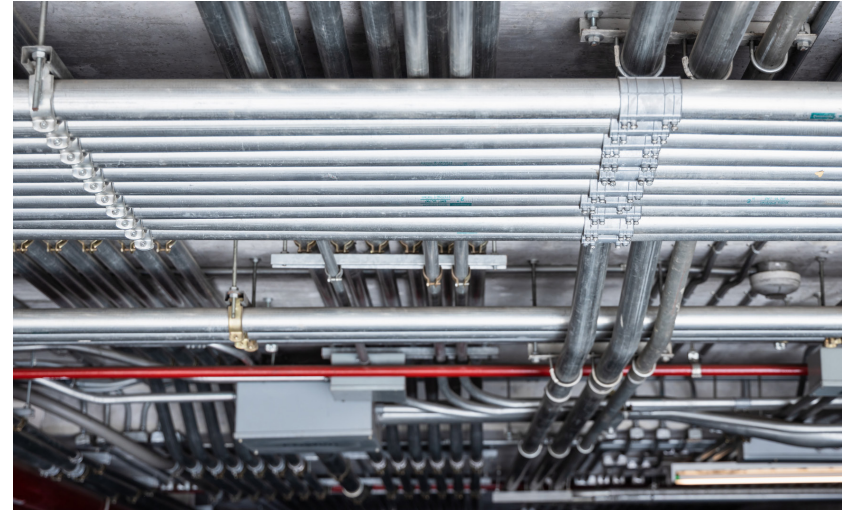
The HC127 is a special tool for designed to make extremely accurate perpendicular and centered holes up to 127 mm diameter in pipes of various materials. It can work with a wide range of pipe sizes, roughly from 32 mm to 203 mm and even up to 600 mm with the optional longer chain. It uses a chain-clamp system which securely holds the machine perfectly centered and perpendicular to the pipe. The 5/8" 3-jaw chuck mounts various types of hole saws as appropriate for the material of the pipe being drilled. The tool has a crank driven guidance system, and the crank handle has a push-button quick-release which mounts on either side of the machine. The 1100 W high-torque motor features a relay-type switch on the back of the motor unit, so it can be operated from either side.

Its spirit level helps ensure good alignment and it is easy to drill on pipes which are already installed in position.

Target Groups and Applications

For operators in the metalworking, plumbing, industrial maintenance, and fire safety fields, or anyone who needs to drill perpendicular holes in pipes, this is the tool for the job.

Its main purpose is preparing the pipes for the installation of tapping saddles, tapping sleeves, branch saddles, welded tees, mechanical tee fittings, and similar fittings. Since these types of couplings require accurate, centered, and perpendicular holes, the HC127 is the perfect solution.



Sales Arguments

High-Torque Motor

The 1100 W motor is geared for torque as required for large diameter hole saws drilling in cast iron and stainless pipes.



Crank-Driven Guidance

The guidance mechanism ensures that the cutting tool remains centered and perpendicular throughout its stroke.



Chain Clamp System

The clamping system ensures the hole is centered and perpendicular to the pipe and allows a wide range of pipe diameters to be clamped.



Rear-Mounted Switch

Allows the switch to be operated from either side of the machine.



Carry Handle

Well balanced handle allows easy transport and positioning of the tool.



Quick-Release Crank

The push button is tool free and allows the crank handle to be mounted on the opposite side of the machine as needed.



Large Chuck

5/8" (16 mm) chuck allows secure mounting of hole saw sizes.



Technical Specification

Model	HC127
Power Input	1100 W
Voltage	220-240 V~ 50-60 Hz or 110-120 V~ 50-60 Hz
No Load Speed	130 min ⁻¹
Max. Cutting Capacity (Hole Cutter)	127 mm
Pipe Mounting Capacity	32 mm - 203 mm (600 mm w/ optional Long Chain Set)
Drill Chuck Capacity	16 mm shank
Overload Protection	With
Weight	14.5 kg (31.9 lb) Not including Crank Handle

- ① Motor Switch
- ② Chain Clamp System
- ③ Hole Cutter (Not included)
- ④ 5/8" (16 mm) chuck
- ⑤ Carry Handle
- ⑥ High-Torque Motor
- ⑦ Crank-Driven Guidance



Offer Content

Standard Accessories

- ① HC127 Hole Cutting Drill
- ② Crank Handle Set
- ③ 16 mm (5/8") Chuck & Chuck Key

Optional Accessories

- ④ Long Chain Set (for pipes up to 600 mm diameter)



Working Materials



Tapping Sleeve



Tapping Saddle



Mechanical Tee Fitting



Welded Tees

Comparison Table

Brand



Hole Cutting Pipe Drills



Model No.	HC127		HC450
Power Input	1100 W	👍	900 W
Drilling Capacity (hole cutters)	127 mm (5")	👍	120 mm (4-3/4")
No Load Speed	130 min ⁻¹		110 min ⁻¹
Ø Pipe Mounting Capacity	32-203 mm (1-1/4" - 8") 600 mm (24") w/ optional chains	👍	30-200 mm (1-1/4" - 8") (no optional chain available)
Drill Chuck Capacity	16 mm (5/8") shank		16 mm (5/8") shank
Spirit Levels	Yes		Yes
Overload Protection	Yes		Yes
Packaging	Plastic Carry Case		Cardboard Box
Weight	14.5 kg (31.9 lb)		19 kg (42.0 lb)

Conclusion

The **AGP** HC127 has more power, larger capacity and lighter weight. Also, for the **AGP** HC127, the carry case is offered as standard equipment while for the Ridgid the case is a very expensive optional purchase. Very importantly, the price of the **AGP** HC127 is much more reasonable and with lower after service cost. The **AGP** HC127 has superior function for a much better value, making it the obvious best choice.

Tool Dimensions (mm)

