



CS320 Metal Cutting Circular Saw

Quickly cut metals such as steel, stainless, aluminum

May. 2024

Internal & Confidential

AGP | CS320 Metal Cutting Circular Saw

AGP TAIWAN

Lee Yeong Industrial Co., Ltd.
No.2, Kejia Rd., Douliu City, 64057, Taiwan
Tel : 886-5-5518689 Fax : 886-5-5518635

AGP EUROPE BV

Evenbroekveld 16D, 9420 Erpe-Mere, Belgium
Tel : +32 53 21 62 22 Fax : +32 53 83 88 20



Introduction

Target group & Applications

CS320 Introduction

The CS320 is a hand-held metal-cutting circular saw for the dry cutting of a variety of metal materials. It uses a 320 mm blade for up to 128 mm depth of cut. The 1800 W motor features soft start, overload protection, and a useful LED load indicator lamp, allowing the operator to work at optimal efficiency. The ergonomic main and side handles allow excellent control.

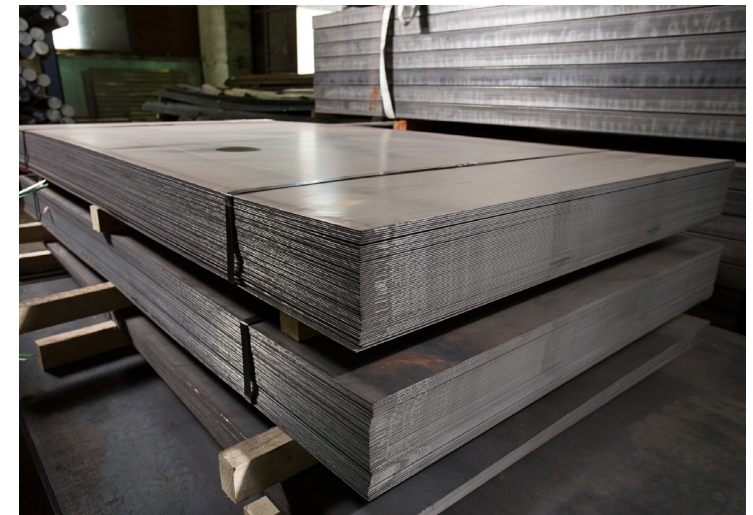
The tool-free, infinitely adjustable depth stop allows limited depth cuts when necessary. There is a swarf collection chamber which is tool free to open and easy to empty out. The vacuum port allows connection to a vacuum cleaner for dust control when cutting composite materials. One notable unique feature is the optional guide rail system. This allows precise, straight cuts on large panels.

Target Groups and Applications

For operators in the fields of metalworking, fabrication, construction, or for anyone who needs to quickly cut a variety of metal work materials, the CS320 is an excellent tool and makes the perfect complement to a dry-cut chop saw. One uses the chop saw when the workpiece can be brought to the tool, and one uses the CS320 when the tool must be brought to the workpiece.

A variety of metals can be cut, such as steel, stainless steel, aluminum, and sheet metal composite materials. There are different blades available to suit these different materials. The work pieces are typically shaped, hollow, metal construction materials, such as box section and round tubing, C-section and angle section materials, diamond plate materials, aluminum extrusions, etc.

One special application, to which this tool is especially suited, is the cutting of sandwich panels, which are a composite material comprising PU insulation surrounded by corrugated sheet steel. This tool is the champion of this solution, cleanly and accurately cutting corrugated sandwich panels up to about 100mm thickness.



Sales Arguments

Adjustable Depth Control

Tool-free infinitely adjustable depth control for situations where the depth of cut must be limited to a certain amount.

Unmatched Depth of Cut

The 320 mm blade allows 128 mm depth of cut, for the cutting of large section workpieces.



Swarf Chamber

The swarf chamber catches most of the swarf, and is easy to open and dump out, allowing a cleaner work area.



Guide Rail Compatible

The optional guide rail allows precise, straight cuts on panels, even on corrugated and grated materials.



Vacuum Port

Unique for a metal saw, the vacuum port allows dust control with messy, dust creating work composite construction materials, such as sandwich panels.



LED Load Indicator

Allows the operator to maintain the tool at optimal load for maximum work efficiency.



Kicker Lever

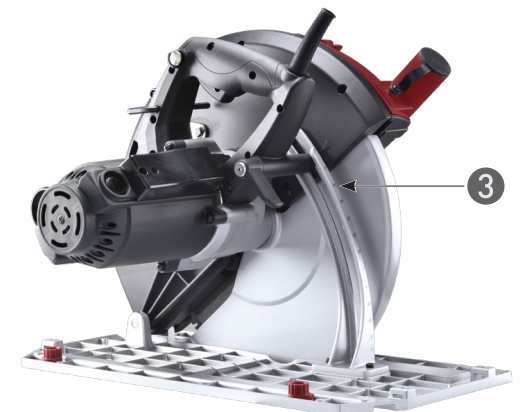
The kicker lever allows the lower blade guard to smoothly open on thick sandwich panels and similar materials.



Technical Specifications

Model	CS320
Power Input	1800 W (220-240 V), 1700 W (110-120 V)
Voltage, Frequency	220-240 V~ 50-60 Hz or 110-120 V~ 50-60 Hz
No Load (Rated Load) Speed	1700 (1020) min ⁻¹
Rated Blade Diameter	320 mm
Arbor Hole Diameter	25.4 mm (1")
Max Cutting Depth	128 mm (121 mm on Guide Rail)
Soft Start & Overload Protection	With
Net Weight	8.4 kg (18.5 lb)

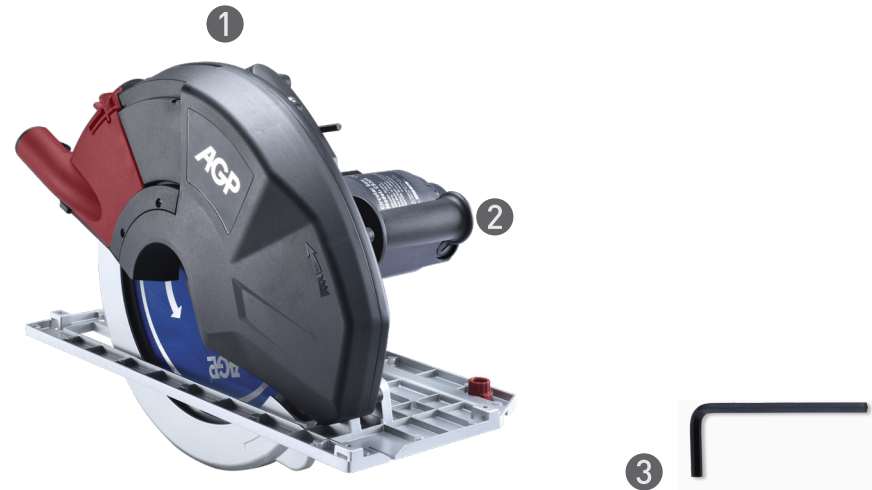
- ① LED Load Indicator
- ② Kicker Lever
- ③ Adjustable Depth Control
- ④ Vacuum Port
- ⑤ Swarf Chamber
- ⑥ Side Handle



Offer Content

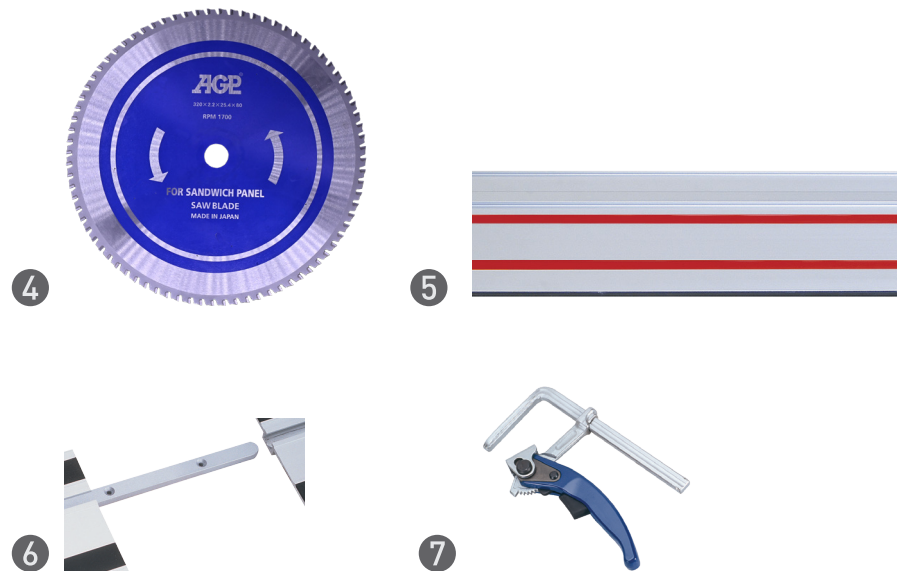
Standard Accessories

- ① CS320 Metal Cutting Circular Saw
- ② Side Handle
- ③ M6 Hex Key

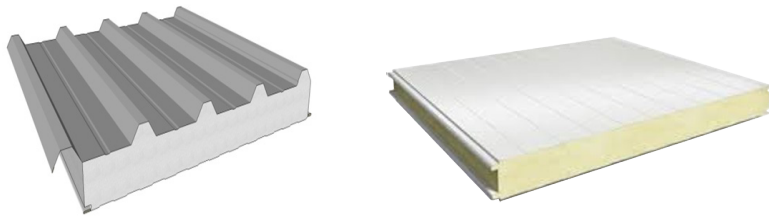


Optional Accessories

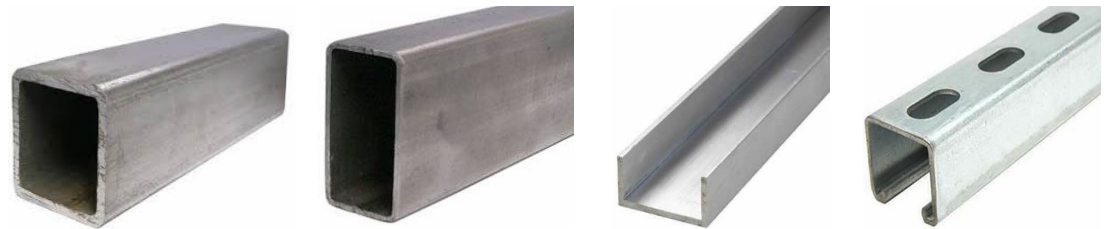
- ④ TCT Saw Blades (Excellent for sandwich panel)
- ⑤ Guide Rail (1400 mm / 800 mm)
- ⑥ Guide Rail Connector
- ⑦ Lever Clamp



Work Materials



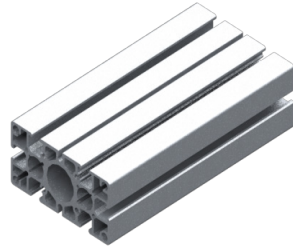
Sandwich Panels up to 120 mm thick



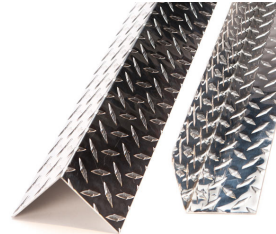
Box Section Steel



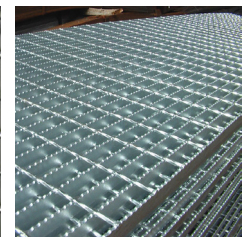
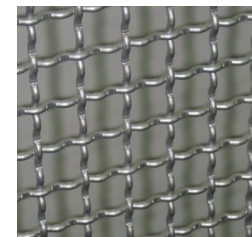
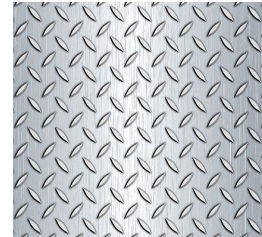
Steel Tubing



Aluminum Extrusions



Diamond Plate



Metal gratings

Comparison Table

Brand

AGP

JEPSON POWER
Leading Through Innovation GERMANY

metallkraft
Metallbearbeitungsmaschinen

FLEX
has original

ALFRA

Rotabroach
The original name for hole cutting systems

EUROBOOR
FOR PROFESSIONALS BY PROFESSIONALS

evolution

Metal-Cutting
Circular Saws



Model	CS320	Hand Dry Cutter 8230N	HKS 230	CSM 4060	Rotaspeed 230/9	Element 9	EHC.230/4	EVO230
Power Input	1800 W	1700 W	1700 W	1400 W	1700 W	1800 W	1800 W	1750 W
No Load Speed	1700 min ⁻¹	2200 min ⁻¹	2200 min ⁻¹	3800 min ⁻¹	2600 min ⁻¹	2300 min ⁻¹	2300 min ⁻¹	2700 min ⁻¹
Blade Diameter	320 mm (12-5/8")	230 mm (9")	230 mm (9")	185 mm (7-1/4")	230 mm (9")	230 mm (9")	230 mm (9")	230 mm (9")
Depth of Cut	128 mm (121 mm on guide rail)	82 mm	82 mm	63 mm	82 mm	83 mm	83 mm	83 mm
Max. Plate Thickness	6 mm (1/4")	6 mm (1/4")	6 mm (1/4")	6 mm (1/4")	6 mm (1/4")	6 mm (1/4")	6 mm (1/4")	6 mm (1/4")
Arbor Ø	25.4 mm (1")	25.4 mm	25.4 mm	20 mm	25.4 mm (1")	25.4 mm (1")	25.4 mm (1")	25.4 mm (1")
Guide Rail Compatible	Yes	Yes	No	No	No	No	No	No
Bevel Cut Capable	No	Yes	Yes	No	Yes	Yes	Yes	Yes
Weight	8.4 kg	8.2 kg	8.2 kg	5.4 kg	7.1 kg	9.5 kg	9.7 kg	8.6 kg
LED Load Indicator	Yes	No	No	No	No	No	No	No
Soft Start	Yes	Yes	Yes	Yes	Yes	Yes	Yes	Yes
Overload Protection	Yes	Yes	Yes	Yes	Yes	Yes	Yes	Yes
Vacuum Compatible	Yes	No	No	No	No	No	No	No
Swarf Collection Chamber	Yes	Yes	Yes	Yes	Yes	Yes	Yes	Yes
Conclusion	The AGP CS320 is a truly unique tool, with no other metal-cutting circular saw comparable to it. It has dramatically more depth of cut than any other, allowing it to cut materials which are not possible with any other hand-held saw. The unique features of the CS320, such as its vacuum port, guide rail compatibility, and LED load indicator allow it to do jobs the others cannot, especially cutting sandwich panels. It is truly in a class of its own.							

Tool Dimensions (mm)

